



## 746t Hagley Court, Edgbaston, Birmingham, B16 9RE

### £1,326 Per Calendar Month



2025/2026 ACADEMIC YEAR Spacious Student Accommodation Suitable for Students and Professionals

Convenient location  
 3 spacious double bedrooms  
 Quality furniture and elegant fireplaces  
 Well-equipped kitchen and separate dining room  
 Large bathroom with power shower over bath  
 Secure intercom entry  
 Double-glazed windows  
 Central heating  
 Security Alarm  
 LOW DEPOSIT: £400/person (based on a group of 3 people)  
 Available : Rent with Built-in Unlimited Bills Package for only £141.82 per person per week

Spacious 3-bedroom mansion flat in prestigious Edgbaston area. Fully furnished with top-quality furniture, including elegant fireplaces. Conveniently located just a 10-min walk to Broad Street and with easy traffic links to the city center and beyond. The property features a spacious kitchen, separate dining room, and a large bathroom with a power shower over the bath. Secure intercom entry, double-glazed windows, and central heating provide added comfort and security.

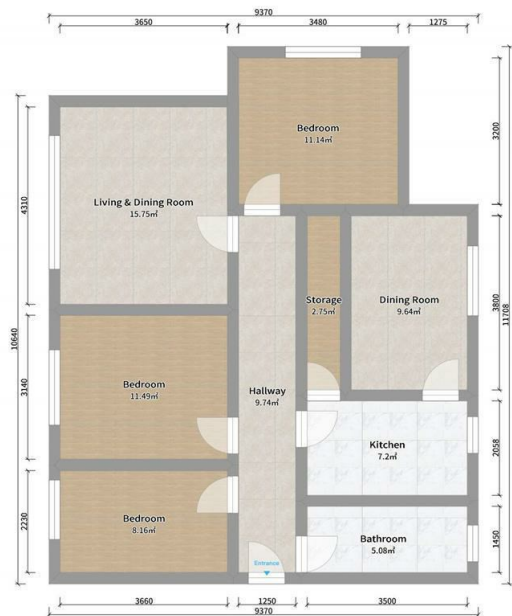
Discover your ideal living space in Edgbaston. Schedule a viewing by appointment only with Mason Knight.

### Viewing

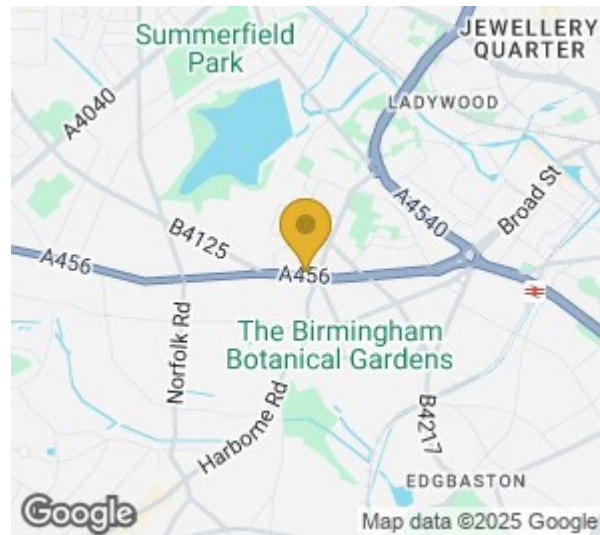
Please contact our MasonKnight Properties Office on 0121 472 5897 if you wish to arrange a viewing appointment for this property or require further information.



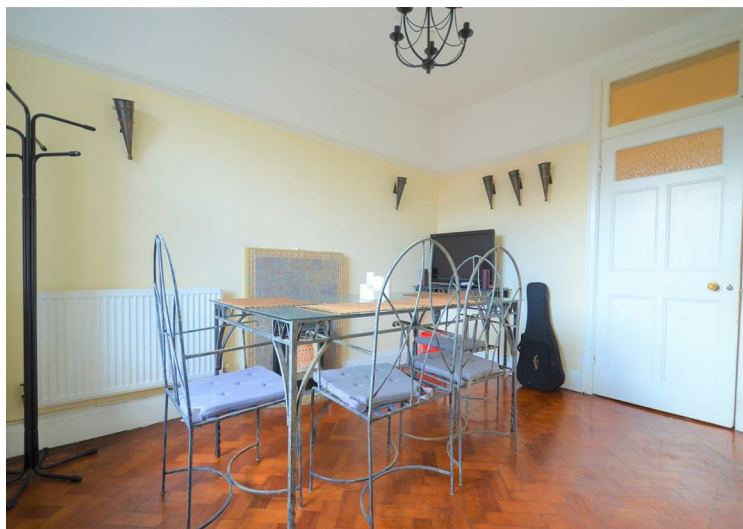




Hagley Court



| Energy Efficiency Rating                    |                         |           | Environmental Impact (CO <sub>2</sub> ) Rating                  |                         |           |
|---|-------------------------|-----------|---|-------------------------|-----------|
|   | Current                 | Potential |   | Current                 | Potential |
| Very energy efficient - lower running costs |                         |           | Very environmentally friendly - lower CO <sub>2</sub> emissions |                         |           |
| (92 plus) <b>A</b>                          |                         |           | (92 plus) <b>A</b>  |                         |           |
| (81-91) <b>B</b>                            |                         |           | (81-91) <b>B</b>  |                         |           |
| (69-80) <b>C</b>                            |                         |           | (69-80) <b>C</b>  |                         |           |
| (55-68) <b>D</b>                            |                         |           | (55-68) <b>D</b>  |                         |           |
| (38-54) <b>E</b>                            |                         |           | (38-54) <b>E</b>  |                         |           |
| (21-37) <b>F</b>                            |                         |           | (21-37) <b>F</b>  |                         |           |
| (1-20) <b>G</b>                             |                         |           | (1-20) <b>G</b>   |                         |           |
| Not energy efficient - higher running costs |                         |           | Not environmentally friendly - higher CO <sub>2</sub> emissions |                         |           |
| <b>England &amp; Wales</b>                  | EU Directive 2002/91/EC |           | <b>England &amp; Wales</b>                                      | EU Directive 2002/91/EC |           |



These particulars, whilst believed to be accurate are set out as a general outline only for guidance and do not constitute any part of an offer or contract. Intending purchasers should not rely on them as statements of representation of fact, but must satisfy themselves by inspection or otherwise as to their accuracy. No person in this firm's employment has the authority to make or give any representation or warranty in respect of the property.